



Embedding Quality Improvement into Organizational Culture



Registration

May 8, 2024 | 12:00-1:30 PM (CT)

https://us06web.zoom.us/webinar/register/WN_QzloDuNbTJKFv2Z_ncMPyQ (Link)

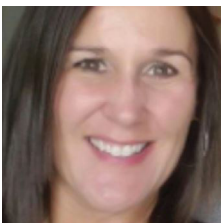
Join your peers at Critical Access Hospitals (CAHs) in Iowa for a collaborative learning and action network (LAN) with the Rural Quality Improvement Technical Assistance (RQITA) team, led by Telligen. This LAN is aimed to bring your entire quality team up-to-date with relevant learning opportunities on quality improvement and the Medicare Beneficiary Quality Improvement Project (MBQIP) Program.

Objectives:

- + Examine key quality improvement processes
- + Review different quality improvement (QI) tools and when to use them (PDSA, Fishbone, Root Cause Analysis)
- + Describe how to leverage MBQIP data for QI
- + Analyze what resources are available from RQITA

Target Audience: Quality Improvement Professionals

Speakers



Ann Loges, BSN, RN, Senior Quality Improvement Facilitator, Telligen

Ann Loges has thirty-one years of nursing experience. Her major accomplishments include leadership in multi-hospital improvement initiatives, electronic health record implementation responsibilities and hospital strategic planning with ties to point of care goals. Ann has experience in the full spectrum of quality data; from patient level chart abstraction, data reporting and use of data measures to drive improvement. This includes practicing as a quality director in a critical access hospital and offering direct technical assistance to multiple hospitals while collaborating with state and federal partners.



Courtney Ryan, Program Specialist, Telligen

Courtney Ryan has over twenty years of experience in the healthcare industry. At Telligen, she supports long-term care facilities with quality measure reporting, teaches quality improvement methodologies, assists the LAN Quality Innovation Network - Quality Improvement Organization strategy for events and provides technical assistance. Her work in healthcare has spanned across many areas including being a certified nursing assistant, performing administrative duties including emergency department admissions/discharges, billing and coding and serving as a QI specialist for the Colorado State Office of Rural Health.



Embedding Quality Improvement into Organizational Culture

Continuing Education



Continuing Medical Education (CME)

Accreditation: This activity has been planned and implemented in accordance with the accreditation requirements and policies of the Iowa Medical Society (IMS). Iowa Healthcare Collaborative (IHC) is accredited by the IMS to provide continuing medical education for physicians.

Designation: IHC designates this live activity for a maximum of *1.5 AMA PRA Category 1 Credit(s)*[™]. Physicians should claim only the credit commensurate with the extent of their participation in the activity.

Commercial Support: This activity was developed without support from any ineligible company. *The ACCME defines ineligible companies as those whose primary business is producing, marketing, selling, re-selling, or distributing healthcare products used by or on patients. Note: The ACCME does not consider providers of clinical service directly to patients to be commercial interests unless the provider of clinical services is owned, or controlled by, and ACCME defined ineligible company.

Disclosure: IHC adheres to the Standards for Integrity and Independence in Accredited Continuing Education. The content of this activity is not related to products or the business lines of an ACCME-defined ineligible company. None of the planners or moderators for this educational activity have relevant financial relationships to disclose with ineligible companies whose primary business is producing, marketing, selling, re-selling, or distributing products used by or on patients.

Note: Nurse Practitioners and Registered Nurses: for recertification, the American Nurses Credentialing Center accepts *AMA PRA Category 1 Credit*[™] issued by organizations accredited by the ACCME (Accreditation Council for Continuing Medical Education). For relicensure, the majority of state boards around the nation accept *AMA PRA Category 1 Credit*[™] for attendance at structured learning activities offered by accredited organizations. Many other disciplines such as researchers, PharmD's, occupational therapists, physical therapists, anesthesia techs, societies, and credentialing bodies accept the *AMA PRA Category 1 Credit*[™] as an equivalent if the topic is relevant to the applicant's field or discipline. IHC will provide you with an attendance certificate post event, you will utilize this certificate to submit to your respective board for relicensure. *We suggest that learners check with their state licensing board to ensure they accept reciprocity with *AMA PRA Category 1 Credit*[™] for re-licensure*